



Melrose Park

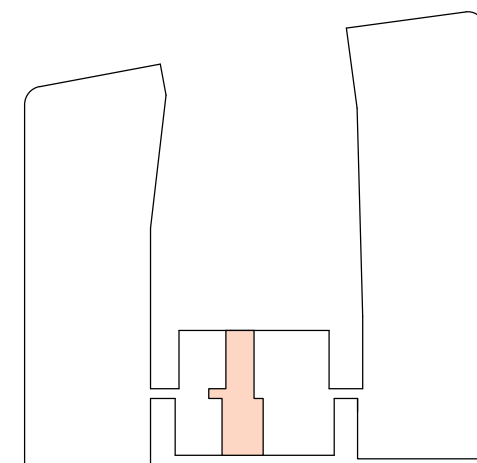
2 BED

APARTMENT N°: 709

LOT N°: 93

LEVEL: 7

Internal Area89m²
Balcony Area.....11m²
Total Area.....100m²



MELROSE PARK.COM.AU

Disclaimer: This floor plan has been prepared for marketing purposes only. All descriptions, dimensions, depictions and other details in this floor plan may not be to scale and may vary from the property as built. Your attention is drawn to the special conditions of the contract for sale of land. No third party has any authority to make or give any representation or warranty in relation to the property unless the representation or warranty is confirmed by Tyriel Developments Pty Ltd ACN 610 295 120 and included in the contract for sale of land. Furniture shown is not included. 18.10.2018 V6.

Proudly developed by

PAYCE

Marketed by

BOSTON
MARKETING

